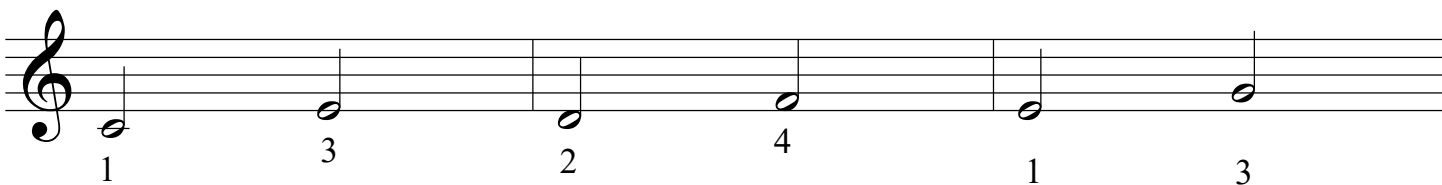
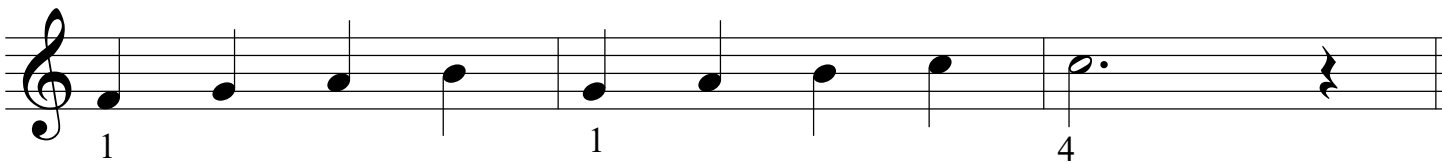
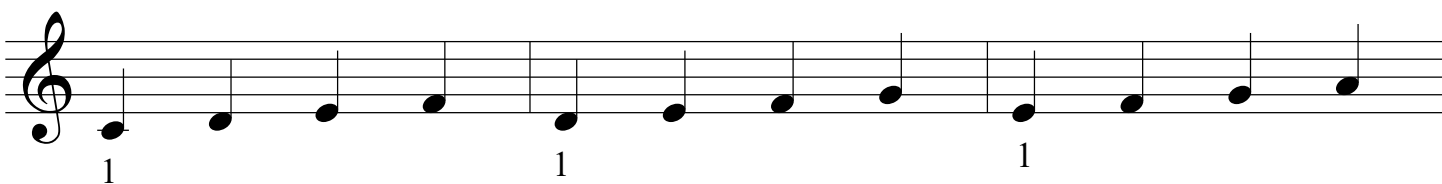
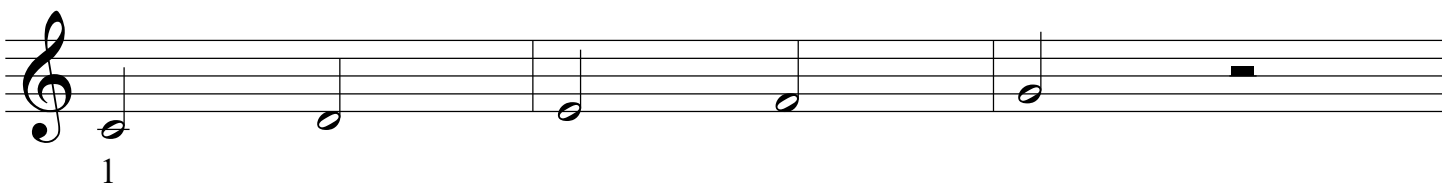
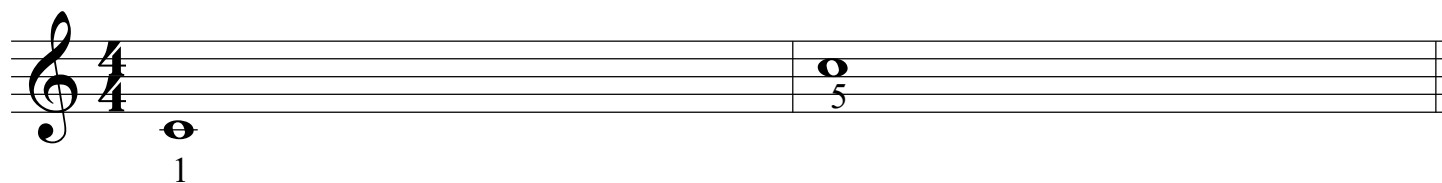


# ト音記号チェック



2 4 1 3 4

1 2 3 4

1 2 1 2 3

5 3 1 2 1 3 1 2

1 12 13 14 15

1 13 135 1 13 135

1 1 1 1 1

A musical staff in treble clef containing seven measures. The notes are: Measure 1: G4, A4, B4; Measure 2: C5, B4, A4; Measure 3: G4, F4, E4; Measure 4: D4, C4, B3; Measure 5: A3, G3, F3; Measure 6: E3, D3, C3; Measure 7: B2, A2, G2. The numbers 125, 135, and 145 are printed below the staff, corresponding to the notes in the second, fourth, and sixth measures respectively.